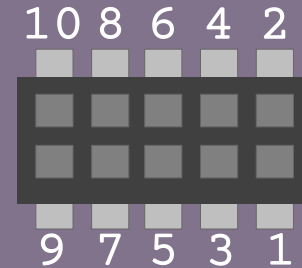
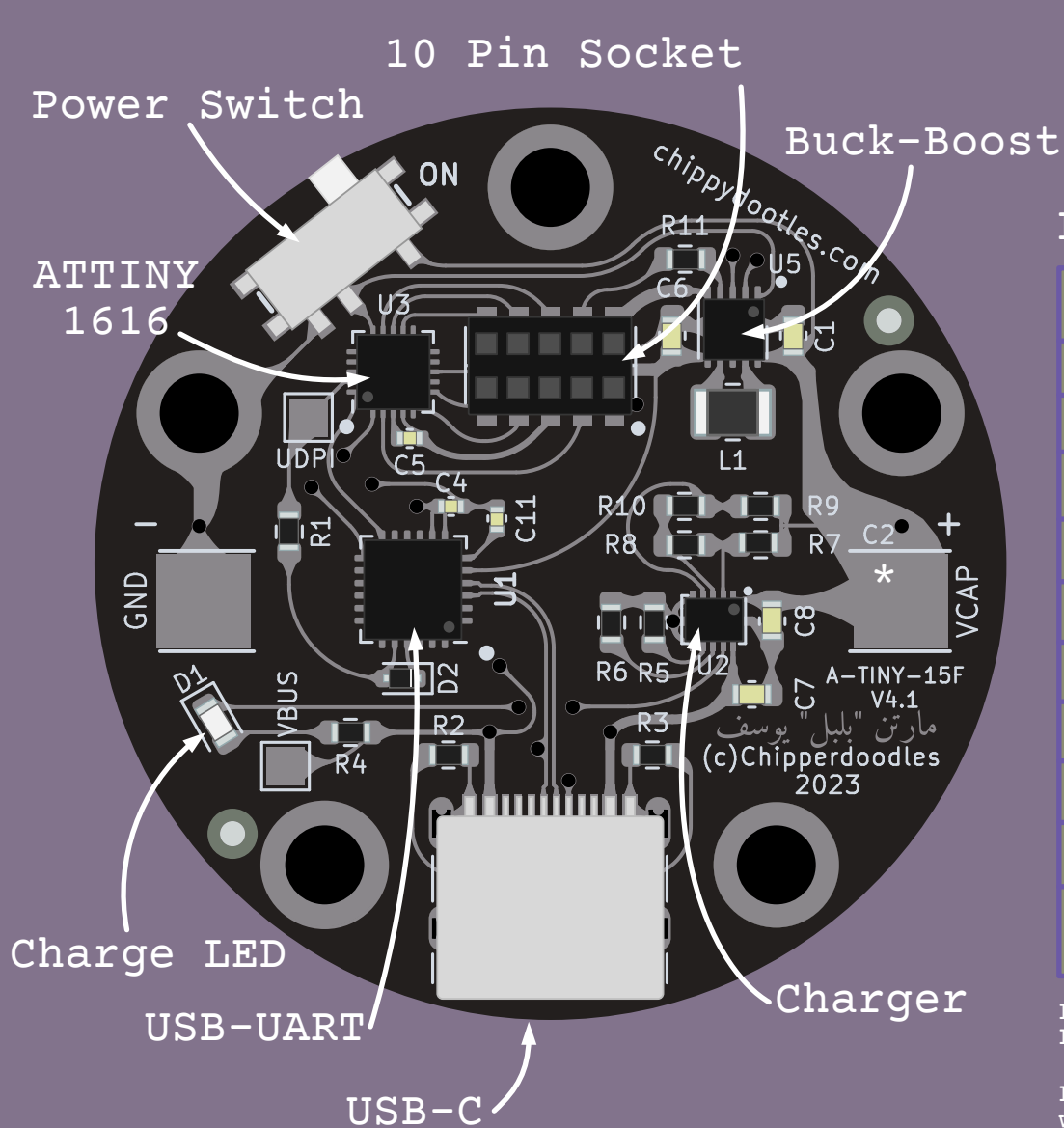


Anwaar Amulet A-Tiny-15f



Pinout Table

Pin	Port	PWM	ADC	PTC	OTHER
1	n/a	n/a	n/a	n/a	CFG1
2	n/a	n/a	n/a	n/a	CFG3
3	PA3	WO3	YES	NO	EXTCLK
4	GND	N/A	N/A	N/A	All standoffs also ground
5	VDD	N/A	N/A	N/A	VDD 1.8-3.6 V
6	PB0	WO0	YES	YES	SCL
7	PA4	WO4	YES	YES	
8	PB1	WO1	YES	YES	SDA
9	PA5	WO5	YES	YES	
10	PB2	WO2	NO	NO	

PWM notes: PB0, PB1, PB2 can be used 16 bit timer mode, PA3, PA4, PA5 can only be used in 8 bit split mode.

PTC notes: Ptc is the built in touch controller, can only use with qtouch or experimental arduino library.

CFG: these attach to resistors on a faceplate to configure the two possible VDD. 5v may be possible but is untested currently. Recommended voltage range is 1.8-3.6 V.

*Hybrid cap not illustrated in order to show components beneath it.